

# *Southern California Bamboo*

The newsletter of the Southern California Chapter of the American Bamboo Society.  
A California 501 (c) (3) non-profit educational charitable corporation, incorporated July 22, 1991  
Chapter Web site: <http://www.socalabs.org>

Volume 25, No. 1

August, 2019

## **Fall 2019 Bamboo Sale**

Exciting news everybody! ABS SoCal is holding a bamboo sale Saturday September 21, 2019, at the San Diego Botanic Garden in Encinitas, Calif. The sale is set for 9 am to 2 pm. Individual growers will be bringing potted bamboo plants. *Bambusa lako*, a highly desirable clumping black bamboo is one species that has been promised to be available for purchase. Admission will be charged by San Diego Botanic Garden.



**Figure 2** Plastic tumblers with bamboo design



**Figure 1** Bamboo-themed Cookie Jar

## **Election for Alternate Directors**

Right after our fall bamboo sale we will take nominations for 2 alternate directors for an election to be held later this year.

## Bamboo Construction Event at Joshua Tree R.V. Campground

March 16-17, 2019, witnessed the construction of a shade structure utilizing bamboo in the community of Joshua Tree, Calif. Bamboo DNA orchestrated the event which was promoted by ABS SoCal. Our president, Gerard Minakawa, led a team of more than 15 people during the two-day event. As is his style, Gerard carefully explained methods, equipment, and safety procedures.



Figure 3

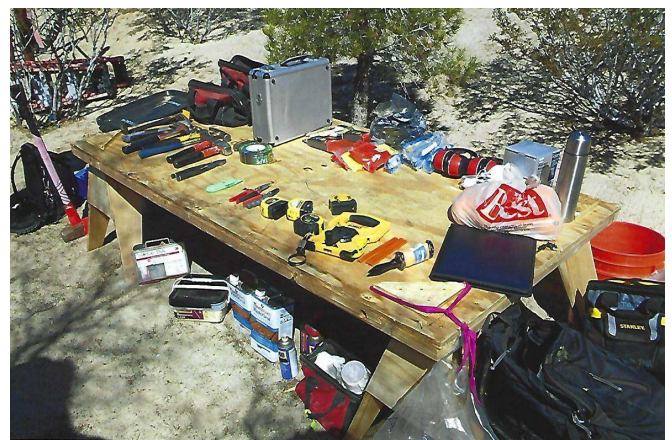


Figure 5



Figure 4



Figure 6

It is important to think of bamboo in four dimensions (4D). Each bamboo pole is different

and should be rolled. Poles may be flipped to test strength. A minimum thickness of 1" is desired. Cracking is the enemy. All poles used in the construction event were of the species *Guadua angustifolia*. A good idea is to stock 25-50% more than what is actually needed for the project. Typically poles are ordered at 29.5 feet length, however, 39.5 feet is the maximum length for a shipping container. At this length, though, the walls are too thin.

Surveying some of the power tools used we find the following: Corded circular saws (worm-drive preferred), Jigsaws for notching, Angle grinders



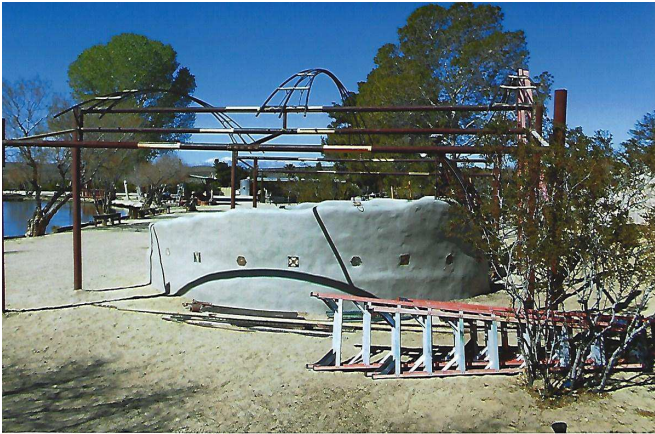


Figure 7

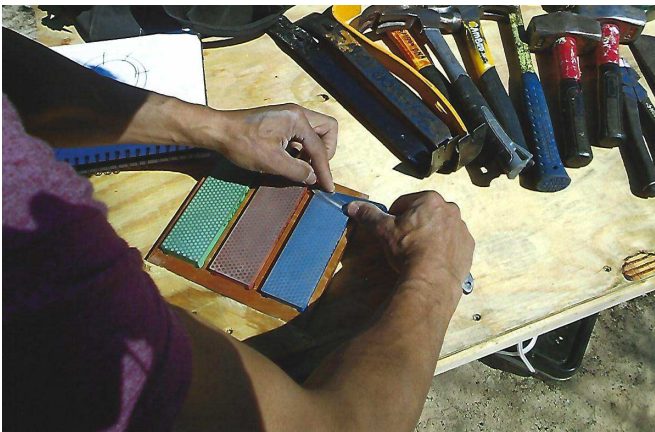


Figure 8



Figure 9

supplied with flapper discs, cutoff wheels, shaping wheels, and sanding discs, and Cordless sawzalls. Hand tools employed included: Splitters (don't use metal hammers on metal splitters), Bamboo hatchet (Silkie brand), Diamond Stove Kit for sharpening (3-5 passes on each grit), and Snips to cut rope and ties. Cut ends of rope should be burned to prevent unraveling. Try to cut poles with equal distance to nodes on ends. Note that green bamboo and dry bamboo is not accepted as green waste in many areas because it snags in the shredding machinery. It is best to pre-drill holes to avoid creating cracks though this is not necessary with green bamboo. Internodes are filled with sand and heated to bend the pole. Alternatively poles may be notched and bent. Metal dowels are facilitate the connections of the ends of poles.



Figure 10

Gerard explained how he makes rapid sketches and rapid models. Bamboo skewers are good for models as they are used to represent 4" diameter poles. The skewers are poked into cardboard and string is used to represent rope or cables. A special glue and fixer are utilized for rapid set. Various fabrics with their patterns aid in the visualization of the final design.





Figure 11

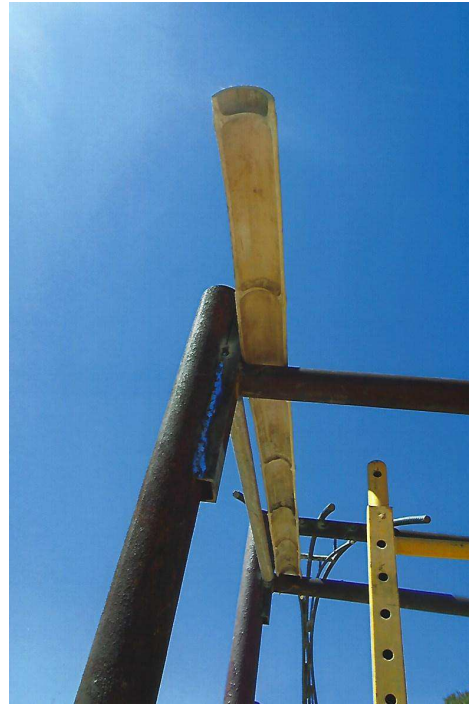


Figure 13



Figure 12



Figure 14

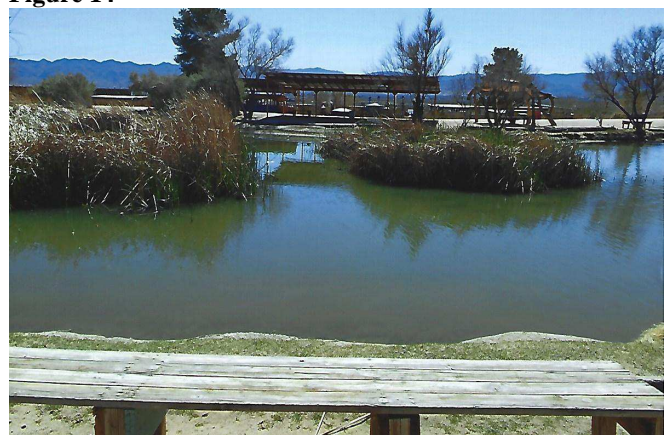


Figure 15





Figure 16



Figure 19



Figure 17



Figure 20



Figure 18



Figure 21





Figure 22



Figure 23



Figure 24



Figure 25



Figure 26





**Figure 27**



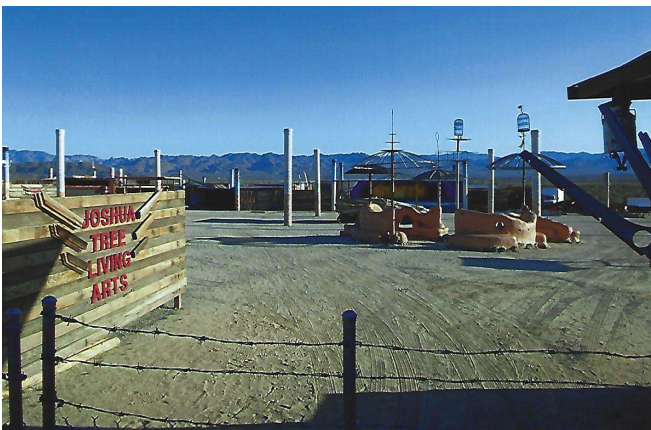
**Figure 30** End of day two finished structure. Photo courtesy of Landy Banks.



**Figure 28**

### **San Diego Zoo Bamboo Tour**

For a second year in a row we were treated to a tour of the bamboos of the San Diego Zoo. This was made possible by Adam Graves Vice President and Dany Ramos Past-President who both are employed at the Zoo. Dany led this year's tour going along the Tiger River trail to show us the bamboos. Sadly the pandas were not available for viewing since they had been shipped back to China.



**Figure 29**



**Figure 31** ABS SoCal on tour with Dany Ramos on left leading group





Figure 32 Cold hardy clumping bamboos



Figure 33 *Phyllostachys nigra*



Figure 34 *Pseudosasa japonica*



Figure 35 *Sasaella masamuneana albostrata*





Figure 36



Figure 39 Tiger



Figure 37



Figure 40 *Borinda papyrifera*



Figure 38

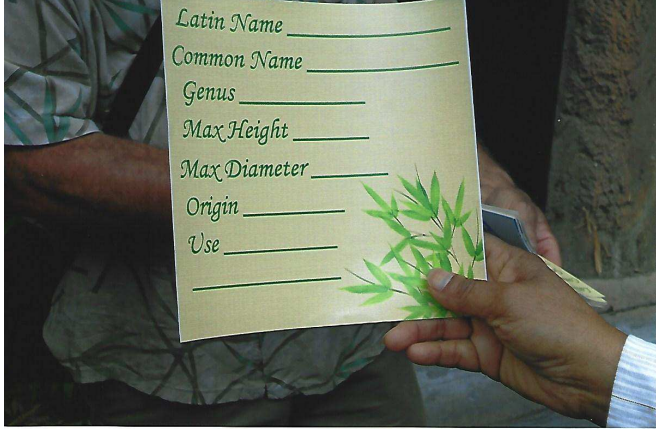


Figure 41 Plant pot label designed by member Gordon Coop and shown during tour





Figure 42 *Sinobambusa tootsik albostrata*



Figure 44



Figure 43 *Indocalamus tessellatus*



Figure 45 Mascot





Figure 46 *Bambusa multiplex* 'Tiny Fern Leaf'



Figure 48



Figure 47 Flamingoes



Figure 49



### Inspiration for a Bamboo Bellows Flute

While visiting the Los Angeles County Fair in September 2018 this instrument was displayed. The sound it makes mimics the horn of a locomotive. Certainly this has adaptability with bamboo.

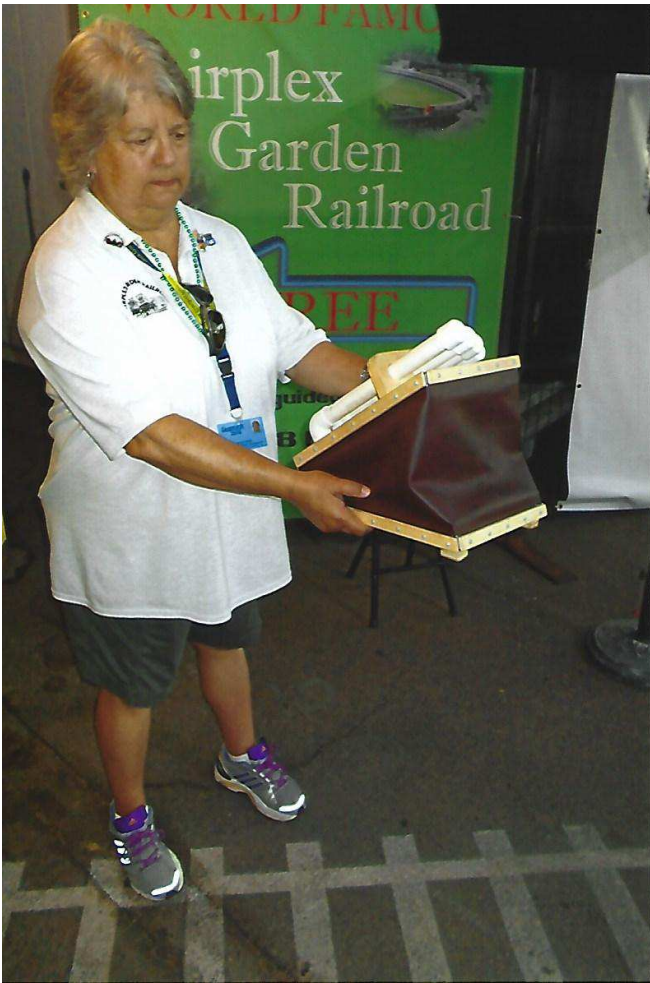


Figure 50

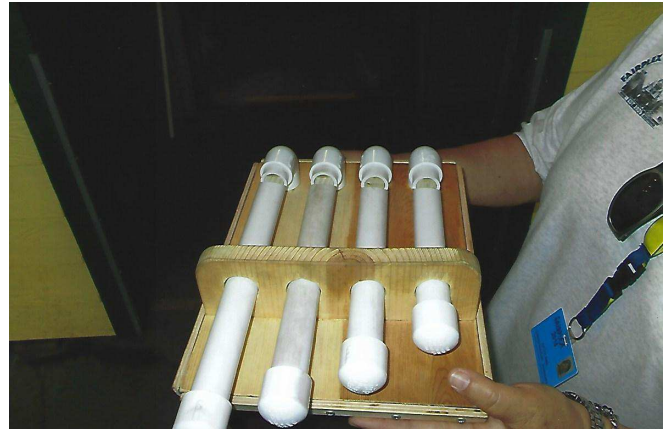


Figure 51

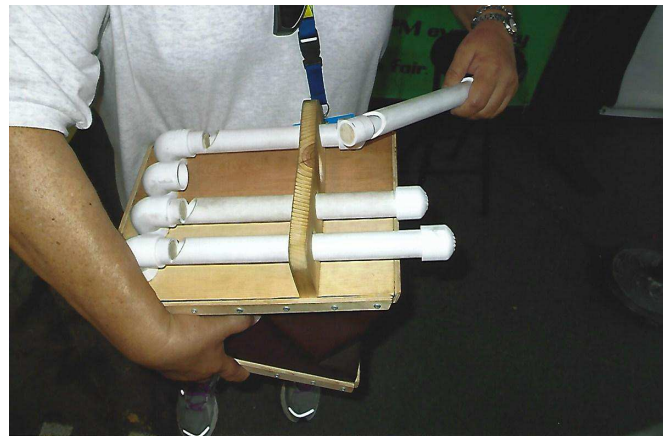


Figure 52



<b>Chapter Officers of the Southern California Chapter of the American Bamboo Society</b>			
Director, President, Webmaster	Gerard Minakawa to '19	(305)965-3997	<a href="mailto:gerard@socalabs.org">gerard@socalabs.org</a>
Director, Vice President	Adam Graves to '19	(619)855-1113	<a href="mailto:adamrgraves@yahoo.com">adamrgraves@yahoo.com</a>
Director, Treasurer, Newsletter Editor,	Roy Wiersma Ph.D. to '19	(909)980-1740	<a href="mailto:RHWIERSMA@aol.com">RHWIERSMA@aol.com</a>
Director, Rec. Sec.	Paulina Hermansen to '19	(818)438-2810	<a href="mailto:paulinahomes@gmail.com">paulinahomes@gmail.com</a>
Director	Dany Ramos Cisneros to '19	(619)818-8277	<a href="mailto:mahalo299@msn.com">mahalo299@msn.com</a>
Alternate Director	Tony Gurnoe to '19	(760)436-3036	<a href="mailto:tony@socalabs.org">tony@socalabs.org</a>
Alternate Director	Landy Banks to '19	(714)943-2822	<a href="mailto:landy@socalabs.org">landy@socalabs.org</a>
Chapter Representative	Adam Graves to '19		

**Figure 53**



The Southern California Chapter of the  
American Bamboo Society, Inc.  
5387 Topaz St.  
Alta Loma, CA 91701



Note: This newsletter is available in PDF format at the ABS-SoCal Web site: [www.socalabs.org](http://www.socalabs.org) – In Color!

**Application for membership in: The American Bamboo Society  
and the Southern California Chapter of the American Bamboo Society**

Renewal       New

Name: \_\_\_\_\_

Mailing Address: \_\_\_\_\_

City: \_\_\_\_\_ State: \_\_\_\_\_ ZIP: \_\_\_\_\_

Phone: (\_\_\_\_\_) \_\_\_\_\_ Fax: (\_\_\_\_\_) \_\_\_\_\_ e-mail: \_\_\_\_\_

- Membership for 2020 is (check one):
- Annual: \$20- ABS SoCal only
  - Annual: \$50- ABS and ABS SoCal Chapter (\$40 digital)
  - Supporting: \$70- ABS and ABS SoCal Chapter (\$60 digital)
  - Lifetime: \$800- ABS Membership only (\$600 digital)
  - Patron: \$130- ABS and ABS SoCal Chapter (\$120 digital)
  - Lifetime: \$300- ABS SoCal Chapter only
  - \$15/year for each additional Chapter checked below:
  - Three years: \$140- ABS and ABS SoCal Chapter (\$110 digital)
  - International: \$55- ABS only (\$40 digital)
  - Florida Caribbean;  Hawaii;  Louisiana- Gulf Coast;  Mid-States;  Northeast;  Northern California;
  - Pacific Northwest;  Southeast;  Texas Bamboo Society

Make check to ABS SoCal: Mail to: **ABS SoCal Membership, 5387 Topaz St. , Alta Loma, CA 91701**

Check here if you do **NOT** want your phone number and e-mail address listed in directories.